



# CrewProtect™ 50

## THE ULTIMATE AIR DECONTAMINATION SYSTEM

The CrewProtect™ 50 packs a particulate and VOC smashing punch. Easy to install and maintain, its high-performance, low power draw design is exactly what your vehicles need to take health to the next level. The advanced filtration technology doesn't meet the standard; it raises the bar to a higher level.



WHITE

GREY



### CrewProtect™ 50

## FEATURES



Protects against particulates, VOCs, and aerosols, which cause short and long-term health concerns.



Easy installation on in-service units with only two wires and a few screws, or on new apparatus through your chosen OEM or apparatus dealer.



Multi-stage cartridge system collects 99.95% of particles at 0.3 microns and removes a broad range of gaseous pollutants.



Made of steel and powder coated to withstand Harsh environments inside emergency vehicles, each unit is compact, rugged, and includes a three-year limited warranty.

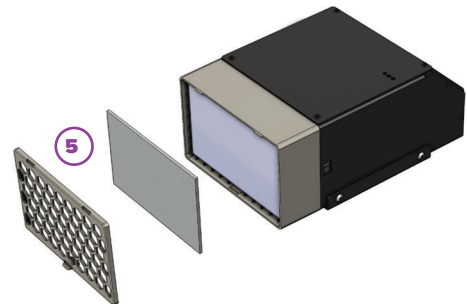
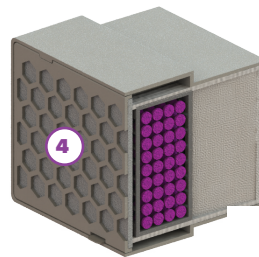
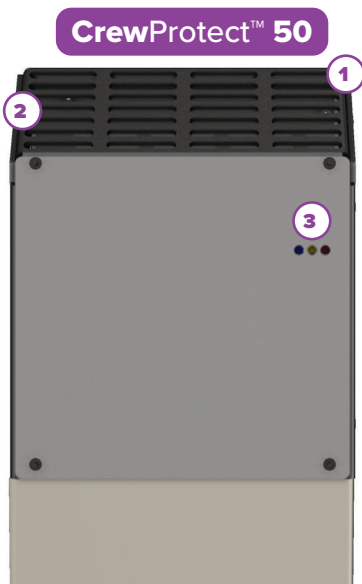


Suitable for small to large firefighting apparatus and vehicles, and multiple units can be placed inside of a vehicle for improved filtration.

## THE ULTIMATE AIR DECONTAMINATION SYSTEM

- 1 DELIBERATE DESIGN**  
Our unbeatable construction is designed to withstand even the harshest environments, ensuring reliable and durable performance.
- 2 FLEXIBLE POWER OPTIONS**  
Designed for small to large fire apparatus and vehicles, our 12-24 VDC unit provides flexibility for where and how it's installed.

- 3 LED FILTER LIFE INDICATOR**  
Stay on top of filter maintenance with our advanced filter life tracking, ensuring timely replacement and consistent air quality.
- 4 ADVANCED FILTRATION TECHNOLOGY**  
Our filtration technology combines HEPA filtration for particulates and molecular filtration for VOCs into a single air decontamination cartridge.
- 5 EXTENDED FILTER LIFE THROUGH DESIGN**  
The CrewProtect 50's washable pre-filter extends the life and expands the range of environments the unit can maintain performance in.



### FilterTechnology

#### HEPA

- Particulates
- Mold Spores
- Aerosols
- Ash & Dust

#### MEDIA

- Formaldehyde
- Toluene
- PAHs
- PFAS
- Many VOCs

## PRODUCT SPECIFICATIONS

<b>WEIGHT</b> 7 lbs 3.17 kg	<b>SIZE</b> 9" x 6" x 4" 23cm x 15cm x 10cm	<b>MEDIA</b> HEPA Sodium permanganate	<b>APPLICATION</b> Small to Large Apparatus	<b>FILTER LIFE INDICATOR</b> 
-----------------------------------	---	---	---	----------------------------------

### FILTRATION PERFORMANCE

AIRFLOW	PARTICLE EFFICIENCY	VOC EFFICIENCY
50/1.42	99.95%	95%
CFM/CMM	0.3 Microns	First Pass
Replacement Filter		CC-059

### PRODUCT LIST

ITEM	SOUND	VOLTAGE	POWER	COLOR
CC-051	60dB	12VDC	0.8/0.37 AMP	GREY
CC-050	60dB	12VDC	0.8/0.37 AMP	WHITE

Visit [tft.com](http://tft.com) to learn more about the CrewProtect™ 50 and its installation process.